

3D Photo Frame Card

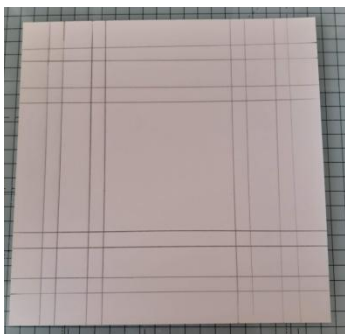
I simply squared off a piece of A4 card to 21cm square (6") to make the little shaker frame, but you can make yours any size you want so long as you have a piece of card large enough.

What you will need to recreate this project:

2 x A4 card - main colour

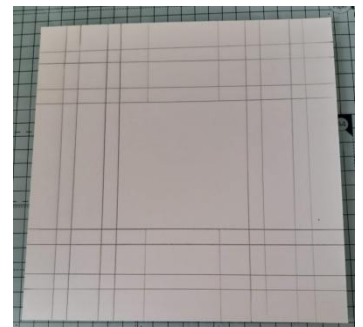
Clear poly film/acetate

Step by step: (Please note: Photo's in these project notes are for guidance only & are taken from a different project with a wider frame - but the method is exactly the same).

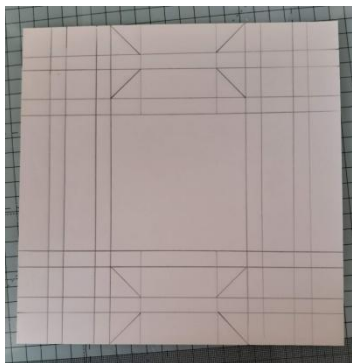


Cut your first sheet of card into a 21cm square & score four borders around all sides at: 1; 2; 3 & 4cm.

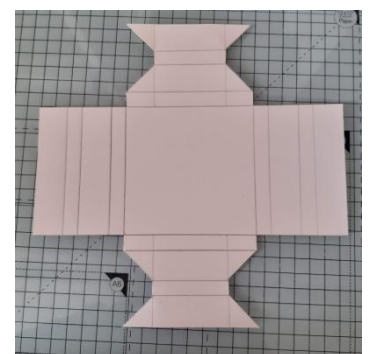
At both top & bottom mark in a further line, lightly with a pencil, at 5 & 16cm through the four score lines as shown in picture to the left..



Using those pencil lines above as a guide, draw in the eight diagonal lines.



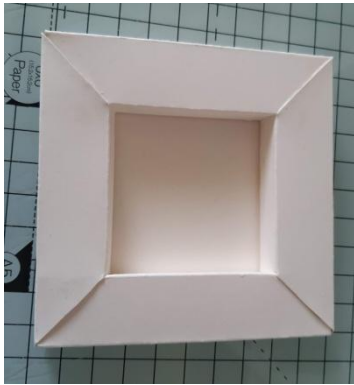
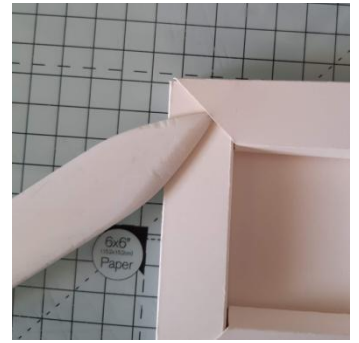
Cut out the piece.



Burnish all score lines & fold the shaped sides into position first before carefully tucking the straight sides inside of the diagonal corners of the shaped sides to lock into position.



For extra sturdiness I added a little wet glue under where the bone folder is indicating, pinching the corner into a full 90 degree angle as I did so. It is easier to do this one corner at a time & waiting for the glue to take hold before moving to the next corner.



This will give you a nice neat finish to your frame, but don't worry if it isn't perfect as the addition of a contrasting frame will hide any imperfections.

For the cover of your project:

Cut the second sheet of card to 27.4 x 13.1cm & , measuring across the long side, score at 13.1 & 14.2cm, fold & burnish these scored lines & adhere your frame centrally to the inside back of the card.

If you wish to make a shaker from this project you simply need to cut a frame measuring 13cm square x 1cm wide & a piece of acetate measuring the same, add your 'shakers' to the inside of the 3D frame & seal using the acetate.

Align your newly cut frame on top to hide the edges of the acetate & then decorate as desired.