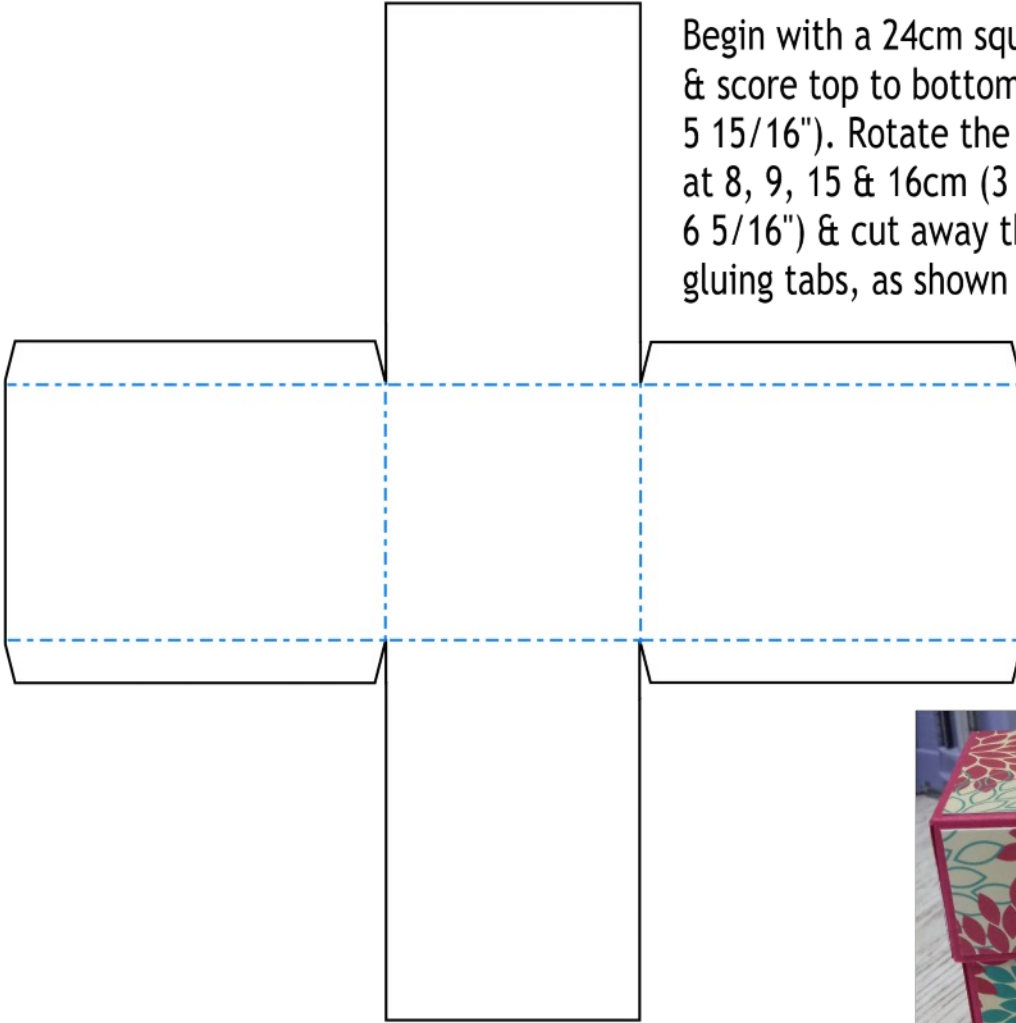
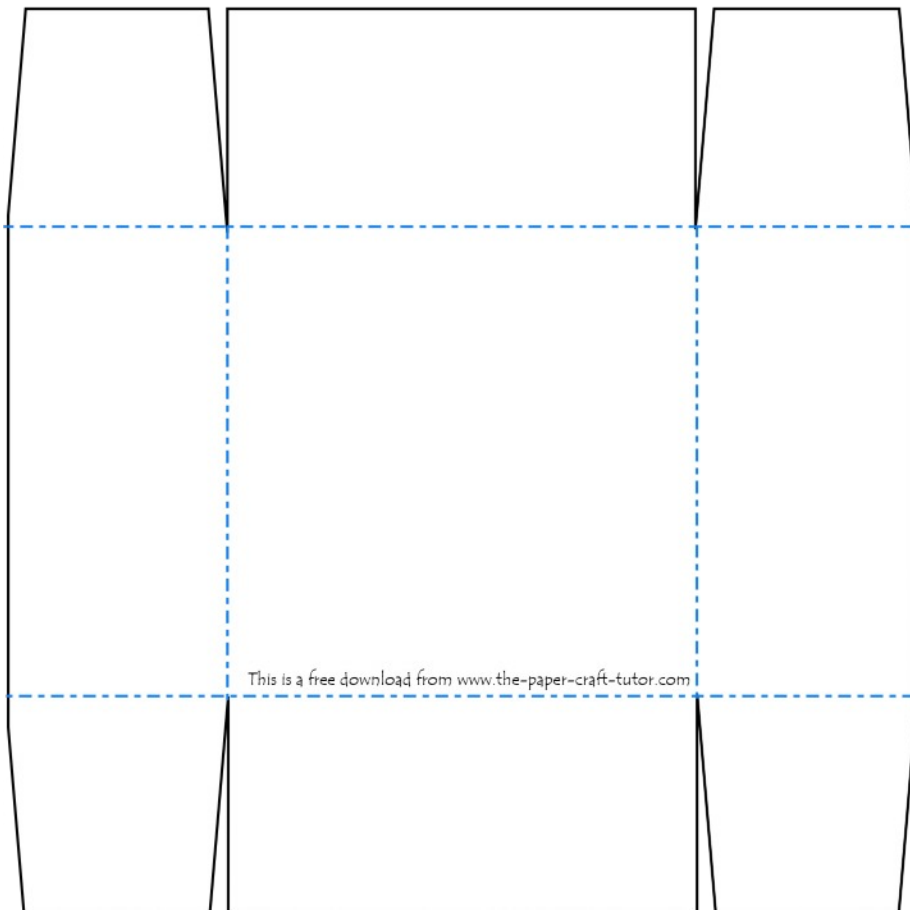


Jar candle base - not to scale

Begin with a 24cm square (9 7/16") of card & score top to bottom at 9 & 15cm (3 9/16 & 5 15/16"). Rotate the card one quarter & score at 8, 9, 15 & 16cm (3 1/8, 3 9/16, 5 15/16 & 6 5/16") & cut away the corners to create gluing tabs, as shown in the diagram.



Lid - actual size template



This is a free download from www.the-paper-craft-tutor.com