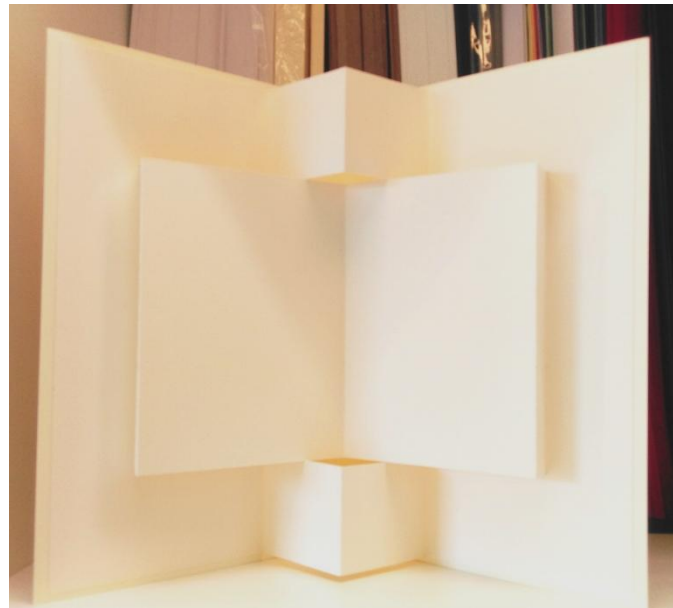


Pop Up Insert Worksheet

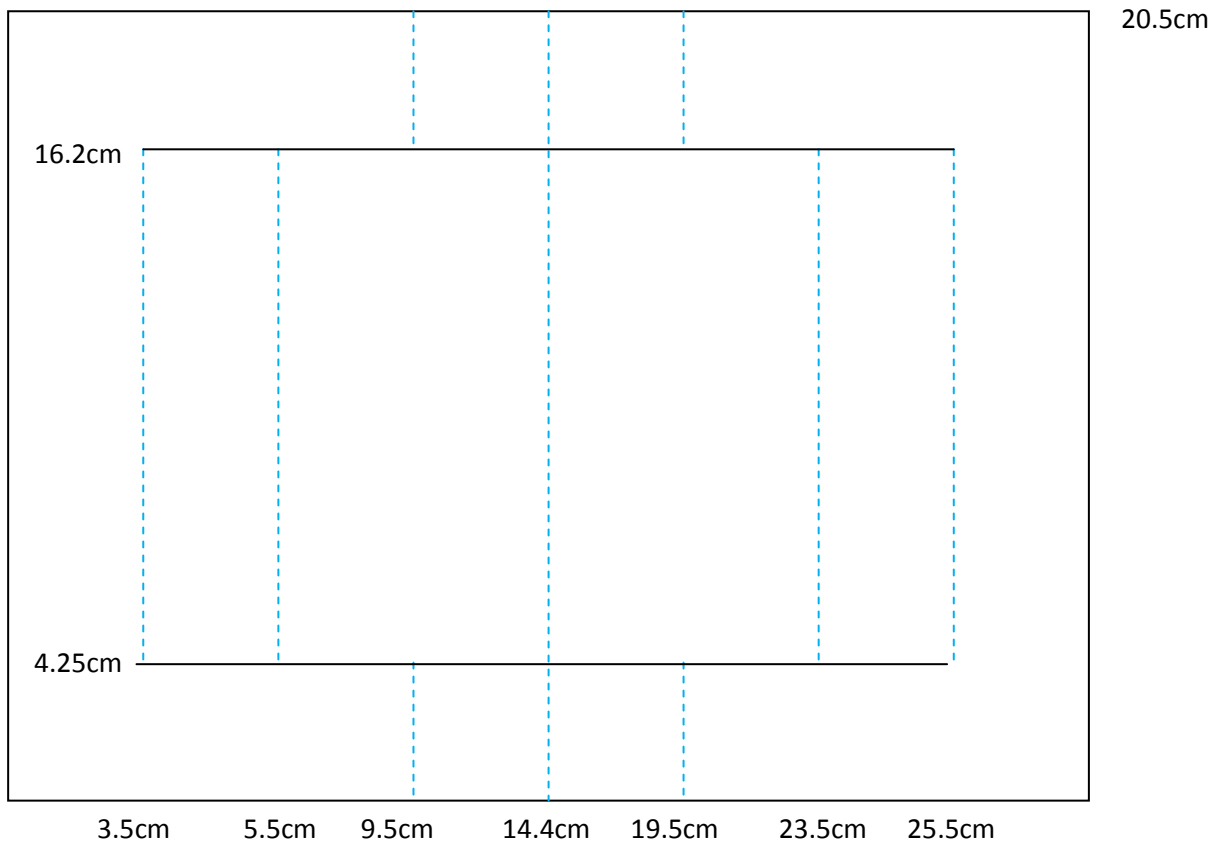


What you will need to recreate this project:

A5 card base (14.8 x 21cm)

A4 sheet heavy paper/thin card, cut to 20.5 x 28.7cm

Follow the diagram below to mark, score & cut the lines indicated on your heavy paper piece. As ever solid black lines indicate the cut lines & perforated blue lines are the score lines. Fold using the main image as a guide.



Secure the insert approximately 1cm in from the left edges on the inside of your card base.